

RESOLUTION NO. 10-145

**A RESOLUTION APPROVING CHANGE ORDER IN THE AMOUNT OF \$5,163.90, AS IT PERTAINS TO THE CONSTRUCTION OF PORT ARTHUR HIGHWAY 73 BUSINESS PARK UTILITY AND STREET IMPROVEMENTS AS APPROVED BY THE CITY OF PORT ARTHUR SECTION 4A ECONOMIC DEVELOPMENT CORPORATION**

**WHEREAS**, the City of Port Arthur Section 4A Economic Development Corporation (the “PAEDC”) entered into a contract with Doughtie Construction Company for \$480,804.75 as it pertains to Job No. EDC-100 for utility and street improvements; and

**WHEREAS**, Arceneaux & Gates Consulting Engineers, Inc. has requested that Doughtie Construction Company submit this Change Order request in the amount of \$5,163.90 to add an additional 6” fire water service connection (the “Connection”) for the two lots located between the Business Park road that parallels Highway 73; and

**WHEREAS**, the Connection was not included in the original design and is now required by the City of Port Arthur (the “City”) for commercial subdivision water systems; and

**WHEREAS**, the estimated cost to install the Connection is \$5,163.90 including materials furnished and installed by the City; and

**WHEREAS**, this Change Order has been approved unanimously by the Board of Directors of the PAEDC on April 5, 2010.

**NOW THEREFORE, BE IT RESOLVED BY THE CITY COUNCIL OF THE CITY OF PORT ARTHUR:**

**Section 1.** That the facts and opinions in the preamble are true and correct.

**Section 2.** That the Change Order in the amount of \$5,163.90 is herein approved as denoted in Exhibit "A".

**Section 3.** That a copy of the caption of this Resolution be spread upon the Minutes of the City Council.

**READ, ADOPTED AND APPROVED** on this 20<sup>th</sup> day of April A.D., 2010, at a Meeting of the City Council of the City of Port Arthur, Texas, by the following vote: AYES:

Mayor Prince; Mayor Pro Tem Segler;  
Councilmembers Chatman, Albright, Beard,  
Williamson, Wise & Henderson.

NOES: None.

Deloris Prince  
DELORIS "BOBBIE" PRINCE, MAYOR

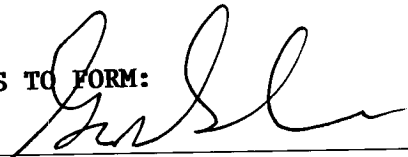
ATTEST:

Terrri Hanks  
TERRI HANKS, CITY SECRETARY

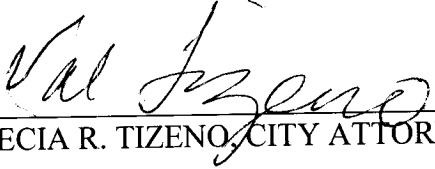
APPROVED:

Floyd Batiste  
FLOYD BATISTE, PAEDC CEO

APPROVED AS TO FORM:

  
\_\_\_\_\_  
GUY N. GOODSON, PAEDC ATTORNEY

APPROVED AS TO FORM:

  
\_\_\_\_\_  
VALECIA R. TIZENO, CITY ATTORNEY

# **EXHIBIT “A”**



## SUBSTANTIAL COMPLETION INSPECTION PUNCH LIST

---

**DATE:** March 15, 2010

**PROJECT:** Water, Sanitary Sewer, Paving and Drainage Facilities  
to Serve the HWY 73 Business Park  
A&G Job No. EDC-100

**ATTENDEES:** Bill McCracken - Doughtie Construction (DC)  
Ross Blacketter, PE - City of Port Arthur (CPA)  
Brian Linthicum - (CPA)  
Jerome Hudson - (CPA)  
Warren Guidry - (CPA)  
Charles Shajari - (CPA)  
Kelly Eldridge - (CPA)  
Keestan Cole - Arceneaux & Gates Consulting Engrs., Inc. (A&G)  
Joe M. Wilson Jr., PE - (A&G)

---

The following items are to be corrected or completed to comply with the Contract Documents:

### **GENERAL ITEMS**

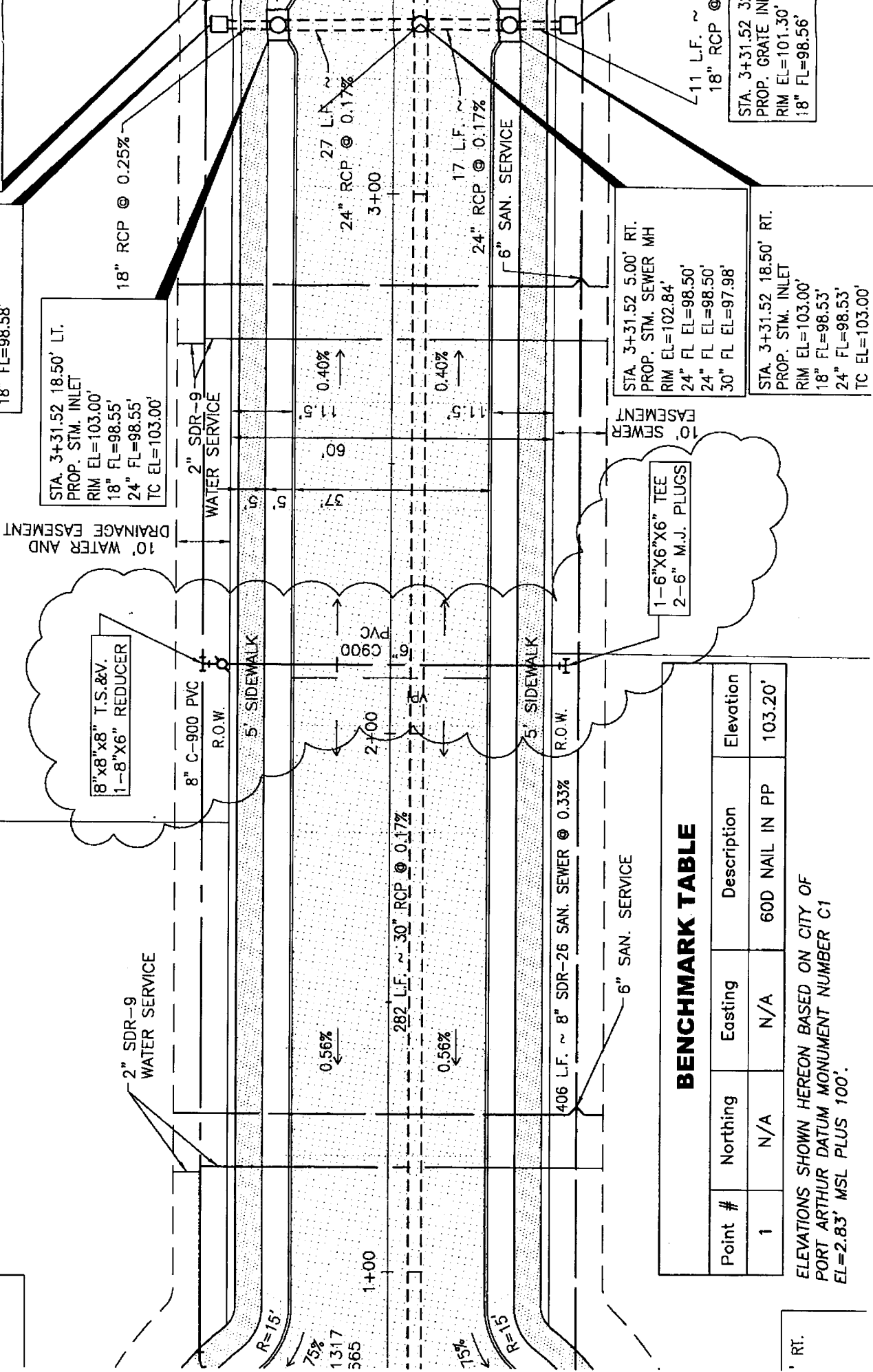
1. Provide protection at all storm sewer inlets per SW3P.
2. Complete tie in at sanitary sewer manhole at Station 4+30.95.  
(DC) coordinate with (CPA) to pump down system in order to complete work.
3. Paint sanitary sewer stake marking sewer services (green). Paint water service stakes (blue).
4. Sanitary sewer manhole covers and rings not CPA standard. Replace with CPA standard ring and cover. *(See Detail Sheet 12)*.
5. Grout riser rings on storm sewer inlets (all locations).
6. Clean and re-paint fire hydrant to CPA standard color (white).
7. Sign Post at Stop Sign and Speed Limit Signs not per plans. Provide post per TxDOT Standard Detail Sheet No.'s 20 thru 43.
8. Provide cost to install approximately 75 L.F. 6" – C-900 PVC per attached sketch. CPA will provide 8" T.S.&V. Contractor to provide remaining components.

END OF PUNCH LIST

---

3.90' LT.  
VLET

STA. 3+31.52 32.50' LT.  
PROP. GRATE INLET  
RIM EL=101.20'  
18" FL=98.58'



STA. 3+31.52 18.50' LT.  
PROP. STM. INLET  
RIM EL=103.00'  
18" FL=98.55'  
24" FL=98.55'  
TC EL=103.00'

10' WATER AND  
DRAINAGE EASEMENT

8"x8"x8" T.S.&V.  
1-8"x6" REDUCER

1-6"x6"x6" TEE  
2-6" M.J. PLUGS

**BENCHMARK TABLE**

Point #	Northing	Easting	Description	Elevation
1	N/A	N/A	60D NAIL IN PP	103.20'

ELEVATIONS SHOWN HEREON BASED ON CITY OF  
PORT ARTHUR DATUM MONUMENT NUMBER C1  
EL=2.83' MSL PLUS 100'.

' RT.

STA. 3+31.52 5.00' RT.  
PROP. STM. SEWER MH  
RIM EL=102.84'  
24" FL EL=98.50'  
24" FL EL=98.50'  
30" FL EL=97.98'

STA. 3+31.52 18.50' RT.  
PROP. STM. INLET  
RIM EL=103.00'  
18" FL=98.53'  
24" FL=98.53'  
TC EL=103.00'

11 L.F. ~  
18" RCP @

STA. 3+31.52 3'  
PROP. GRATE INI  
RIM EL=101.30'  
18" FL=98.56'

18" RCP @ 0.25%

27 L.F. ~  
24" RCP @ 0.17%

17 L.F. ~  
24" RCP @ 0.17%

0.40%

0.40%

0.56%

0.56%

R=15'

R=15'

75%  
1317  
565

75%